

**SANTA ROSA**

• 3175 Range Avenue • Santa Rosa, CA 95403  
• 800-368-8482 • 707.546.5565 • 707.523.3143 (FAX)

**SAN RAFAEL**

• 496 B Street • San Rafael, CA 94901  
• 800.540.3912 • 415.454.3912 • 415.454.0239 (FAX)

**FEES & LAB TIMES**



**ZIRCONIA**

BruxZir® Solid Zirconia	<b>\$135.00</b>
Nobel Procera® PFZ	<b>\$189.00</b>
IPS e.max® ZirCAD/ZirPress PFZ	<b>\$209.00</b>



**COMBINATION CROWN & RPD CASES**

Crown Under Future or Existing RPD	<b>\$69.00</b>
Labor on PFM Attachment	<b>\$99.00</b>
Labor on RPD/CD Attachment	<b>\$59.00</b>



**VENEERS**

IPS e.max® Veneer - CAD or Press	<b>\$149.00</b>
IPS e.max® Layered Veneer	<b>\$179.00</b>
IPS Empress® Esthetic Veneer	<b>\$179.00</b>
IPS Empress® Esthetic Layered Veneer	<b>\$209.00</b>



**MASTERTEMP™ PROVISIONALS**

MasterTemp™ (Per Unit)	<b>\$39.00</b>
MasterTemp Cement over Implant	<b>\$49.00</b>
MasterTemp with Cast Metal Sub-Structure	<b>\$59.00</b>
MasterTemp with Cast Metal over Implant	<b>\$69.00</b>
MasterTemp Screw-Retained over Implant (Parts Extra)	<b>\$79.00</b>
Wire or Kevlar Reinforcement (Per Case)	<b>\$15.00</b>
(Wire Added to All Splints of Case 3+ Units)	
Multi-Year MasterTemp (2 Year Warranty)	<b>\$59.00</b>
Multi-Year MasterTemp over Implant	<b>\$69.00</b>



**IPS e.max CROWN & BRIDGE**

IPS e.max® CAD	<b>\$135.00</b>
IPS e.max® Press	<b>\$179.00</b>
IPS Empress® Layered - CAD or Press (Additional per Unit)	<b>\$30.00</b>



**PFM**

*PressTek™ - Flat Rate per Unit Pricing (Includes Alloy and Porcelain Margins)*

PressTek® PFM - Non-precious	<b>\$135.00</b>
PressTek® PFM - White Noble	<b>\$175.00</b>
PressTek® PFM - White High Noble	<b>\$209.00</b>
PressTek® PFM - Yellow High Noble	<b>\$265.00</b>
PressTek® PFM with Metal Occlusal or Metal Lingual (Plus Alloy)	<b>\$159.00</b>

*Classic™ - Traditional Hand-stacked & Layered (Plus Alloy)*

Classic™ - PFM - (Plus Alloy)	<b>\$185.00</b>
Classic™ - Metal Occlusal	<b>\$22.00</b>



**BITE SPLINTS & NIGHTGUARDS**

Bleach Tray	<b>\$39.00</b>
Comfort Bite Splint (Soft)	<b>\$39.00</b>
Comfort Bite Splint (Hard)	<b>\$49.00</b>
Comfort H/S Bite Splint (Hard/Soft)	<b>\$59.00</b>
EZ-Splint® Classic <sup>1</sup>	<b>\$159.00</b>
EZ-Splint® TMJ <sup>1</sup>	<b>\$165.00</b>
EZ-Splint® Premium <sup>1</sup>	<b>\$175.00</b>
Gelb/Mora Splint	<b>\$175.00</b>

<sup>1</sup> Includes a 1 Year Warranty against loss, wear or defects



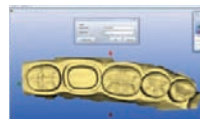
**FULL-CAST**

Full Gold Crown, Onlay or Inlay (Plus Alloy)	<b>\$155.00</b>
--	-----------------



**RESIN NANO CERAMIC**

Lava™ Ultimate – Crown or Onlay	<b>\$135.00</b>
Lava Ultimate - Inlay	<b>\$105.00</b>



**ADDITIONAL SERVICES**

Diagnostic Wax Up - Per Unit (Includes prep guide and temporary matrix)	<b>\$33.00</b>
Porcelain Margin	<b>\$47.00</b>
Complex Case of 6+ Units (Add per Unit)	<b>\$15.00</b>
Soft Tissue Model	<b>\$20.00</b>
Digital Case - Model Work Requested (via Cadent iTero, Sirona CEREC, Lava C.O.S.) (Per Case)	<b>\$20.00</b>
Digital Case - NO Model Work (via Sirona CEREC or Cadent iTero) (Deduct per Case)	<b>(20.00)</b>

**SANTA ROSA**

• 3175 Range Avenue • Santa Rosa, CA 95403  
• 800-368-8482 • 707.546.5565 • 707.523.3143 (FAX)

**SAN RAFAEL**

• 496 B Street • San Rafael, CA 94901  
• 800.540.3912 • 415.454.3912 • 415.454.0239 (FAX)

**FEES & LAB TIMES**



**COMPLETE DENTURE**

Premium True-Life™ Denture	<b>\$625.00</b>
<i>(Price includes Ivoclar Phonares Teeth, Custom 3 Layer Gingival Tinting, Baseplate with Bite Rim, True-Life® Set-Up &amp; Finish with Ivocap Acrylic)</i>	
Classic True-Life™ Denture	<b>\$375.00</b>
<i>(Price includes Kenson Teeth, Baseplate with Bite Rim, True-Life® Set-Up &amp; Finish with Ivobase® Acrylic. Other Premium Teeth Available at Additional Charge.)</i>	
Economy Denture	<b>\$295.00</b>
<i>(Price includes Kenson Teeth, Baseplate with Bite Rim, Set-Up &amp; Finish, with Fluid Resin Acrylic)</i>	



**AVADENT™  
DIGITAL DENTURE**

<b>AvaDent™ Digital Denture*</b>	
AvaDent™ Single Arch (Upper or Lower)	<b>\$375.00</b>
AvaDent™ Duplicate Denture (Per Arch)	<b>\$260.00</b>
<b>AvaDent™ Advanced Try-In (ATI)*</b>	
AvaDent™ ATI (Upper or Lower)	<b>\$375.00</b>
AvaDent™ ATI Processing	<b>\$105.00</b>
<b>AvaDent™ Immediate Denture System*</b>	
AvaDent™ Immediate (Upper or Lower)	<b>\$375.00</b>
AvaDent™ Immediate Temporary Denture	<b>\$235.00</b>
AvaDent™ Digital Denture (Definitive)	<b>\$375.00</b>

\* Fee includes Ivoclar Ivostar Teeth. Dentsply Portrait® IPN® Teeth or Ivoclar BlueLine® Teeth available for \$79 extra.



**RPD - FLEXIBLE  
ALLOY FREE**

Dura-Flex™, VisiClear™, TCS® or Flexite® RPD Complete*	<b>\$259.00</b>
Alloy Free RPD Process & Finish (Your Set-Up)	<b>\$169.00</b>
Alloy Free RPD Rebase	<b>\$159.00</b>
Alloy Free RPD Repair	<b>\$89.00</b>
Cu-Sil® Silicone Retained RPD Complete*	<b>\$399.00</b>

\*Includes Alloy Free RPD Framework, Kenson® Teeth, True-Life™ Set-Up & Finish



**SNORING & SLEEP  
APNEA DEVICES**

QuietNITE® Anti-Snoring / Sleep Apnea Device	<b>\$149.00</b>
EMA® Anti-Snoring / Sleep Apnea Device	<b>\$199.00</b>
Respire® Blue Anti-Snoring / Sleep Apnea Device	<b>\$395.00</b>
Tap® Anti-Snoring / Sleep Apnea Device	<b>\$340.00</b>
Tap® 3 TL Anti-Snoring / Sleep Apnea Device	<b>\$390.00</b>



**RPD - ALLOY BASED**

Vitallium 2000 Framework	<b>\$245.00</b>
Vitallium 2000 Framework Complete *	<b>\$449.00</b>
Wironium® Framework	<b>\$265.00</b>
Wironium® Framework Complete*	<b>\$479.00</b>
Add Dura-Flex™, TCS® or Flexite® Saddles and Clasps to Framework*	<b>\$199.00</b>
Add: Tooth-Colored or Clear Clasp to Alloy Based Framework (Per Clasp)	<b>\$75.00</b>
GC Gradia® Facing (Per Unit)	<b>\$60.00</b>

\*Includes Framework, Kenson® Teeth, True-Life™ Set-Up & Finish



**PLAY SAFE™  
SPORTS MOUTHGUARD**

Junior - 1 Layer EVA with Added Incisal/ Occlusal Protection	<b>\$29.00</b>
Light - 2 Layers Laminated EVA (3 mm Thick)	<b>\$49.00</b>
Light Pro - 3 Layers (1 Hard) Laminated EVA (3.5 mm Thick)	<b>\$59.00</b>
Medium - 2 Layers Laminated EVA (5 mm Thick)	<b>\$69.00</b>
Heavy - 2 Layers Laminated EVA with Power Bands (5 mm Thick)	<b>\$79.00</b>
Heavy Pro - 3 Layers (1 Hard) Laminated EVA (5 mm Thick)	<b>\$89.00</b>
Each Additional Color/Helmet Strap	<b>\$5.00</b>
Team Names/Stickers (Call for Details)/Fuse Upper and Lower	<b>\$10.00</b>

For information on personalizing your PlaySafe Mouthguard with standard or custom colors, and/or an explanation of the 6 levels of mouthguard protection, call us at 800-368-8482.

**ADDITIONAL SERVICES**

Base Plate with Bite Rim	<b>\$50.00</b>
Custom Tray	<b>\$30.00</b>
Denture ID	<b>\$25.00</b>
Reline - Hard	<b>\$145.00</b>
Reline - Soft	<b>\$175.00</b>
Repair - Basic	<b>\$92.00</b>
Stayplate - 1 Tooth (\$13 per Additional Tooth)	<b>\$129.00</b>
Wrought Wire Clasp - In Stayplate	<b>\$30.00</b>

**SANTA ROSA**

• 3175 Range Avenue • Santa Rosa, CA 95403  
• 800-368-8482 • 707.546.5565 • 707.523.3143 (FAX)

**SAN RAFAEL**

• 496 B Street • San Rafael, CA 94901  
• 800.540.3912 • 415.454.3912 • 415.454.0239 (FAX)

**FEES & LAB TIMES**

**IMPLANTS: DIGITAL TREATMENT PLANNING & GUIDED SURGERY**

**TURN-KEY PACKAGES (Appropriate Surgical Kit Required)**

**SimPlant®, Facilitate®, Navigator®**

Surgical Guide + Digital Plan

# Implant (1-3) **\$595.00** (4+) **\$755.00**

**Nobel Biocare Clinician®**

Surgical Template + Digital Plan

# Implant (1) **\$650.00** (2-4) **\$840.00** (5+) **\$975.00**

**Anatontage**

Digital Plan + Surgical Guide **\$645.00**

**IMPLANTS: CONVENTIONAL TREATMENT PLANNING & GUIDED SURGERY**

Clear Acrylic Surgical Stent (Includes 1st Tooth) **\$65.00**

*Extra Charge for Additional Teeth and Drill Guide Sleeves*

Conventional Radiographic Stent, includes 1<sup>st</sup> tooth **\$70.00**

*Additional Tooth, \$10 Each*



**RESTORATIONS OVER IMPLANTS**

PFM - PressTek® (Plus Alloy)	<b>\$135.00</b>
PFM - Classic™ Hand-Stacked (Plus Alloy)	<b>\$185.00</b>
BruxZir® Solid Zirconia	<b>\$135.00</b>
Lava™ Ultimate Resin Nano Ceramic	<b>\$135.00</b>
IPS e.max® CAD	<b>\$135.00</b>
IPS e.max® Press	<b>\$179.00</b>
Nobel Procera PFZ	<b>\$189.00</b>
IPS e.max® ZirCAD /ZirPress	<b>\$209.00</b>
Full-Cast Crown (Plus Alloy)	<b>\$155.00</b>
Screw-Retained Crown - Access Opening	<b>\$49.00</b>



**CUSTOM IMPLANT ABUTMENTS**

*Price Includes Model Work with Soft Tissue, Implant Analog and Screw*

Inclusive® Titanium Abutment <sup>1</sup>	<b>\$299.00</b>
Inclusive® Zirconia Abutment with Titanium Insert <sup>1</sup>	<b>\$299.00</b>
Inclusive® All-Zirconia Abutment <sup>2</sup>	<b>\$299.00</b>
Nobel Procera Titanium Abutment <sup>3</sup>	<b>\$319.00</b>
Nobel Procera Zirconia Abutment <sup>3</sup>	<b>\$399.00</b>
Atlantis Titanium Abutment <sup>4</sup> (Lifetime Warranty)	<b>\$399.00</b>
Atlantis Zirconia Abutment <sup>4</sup> (5 Year Warranty)	<b>\$499.00</b>
Atlantis Zirconia Screw-Retained Crown-Abutment Combo <sup>4</sup> (5 Year Warranty)	<b>\$549.00</b>
Custom Abutment - Cast Alloy (Plus Alloy)	<b>\$189.00</b>
Prepare Stock Implant Abutment	<b>\$89.00</b>

<sup>1</sup> Available for Astra Tech OsseoSpeed, Biomet 3i Certain, Branemark System, NobelActive, NobelReplace, Straumann Bone Level and Zimmer Screw-Vent. Also available for Keystone Primaconnex and Neoss; prices vary.

<sup>2</sup> Available Biomet 3i Certain, NobelReplace and Zimmer Screw-Vent.

<sup>3</sup> Available for Astra Tech, Biomet 3i Hex, Camlog, Endopore Hex, Nobel Biocare and Straumann Tissue Level.

<sup>4</sup> Available for most major implant systems.





**SANTA ROSA**

• 3175 Range Avenue • Santa Rosa, CA 95403  
 • 800-368-8482 • 707.546.5565 • 707.523.3143 (FAX)

**SAN RAFAEL**

• 496 B Street • San Rafael, CA 94901  
 • 800.540.3912 • 415.454.3912 • 415.454.0239 (FAX)

**FEES & LAB TIMES**



**IMPLANT REMOVABLE & FIXED-REMOVABLE**

<b>BruxZir Solid Zirconia Full-Arch Implant Prosthesis</b>	<b>\$2,995.00</b>
<i>Includes final prosthesis, labor, model and die work, analogs, setup, bite blocks, try-ins and verification jigs.</i>	
<b>Inclusive® Screw-Retained Hybrid Denture</b>	<b>\$2,295.00</b>
<i>Includes Precision-Milled Inclusive® Titanium Bar for All Implants (Unlimited), Premium Denture Teeth, Labor, Model Work, Analog, True-Life™ Set-Up, Bite Blocks, Verification Jig and Try-In.</i>	
<b>Screw-Retained Hybrid Denture</b>	<b>\$2,495.00</b>
<i>Includes Precision-Milled Titanium Bar for up to Five Implants, Premium Denture Teeth, Labor, Model Work, Analog, True-Life™ Set-Up &amp; Finish, Bite Blocks, Verification Jig and Try-In.</i>	
<b>Locator Implant Overdenture</b>	<b>\$899.00</b>
<i>Includes Two Locator Attachment Kits, Kenson® Teeth, Labor, Model Work, True-Life™ Set-Up &amp; Finish, Bite Blocks and Try-In.</i>	
<b>Inclusive® Locator CAD/CAM Milled Bar Overdenture</b>	<b>\$2,495.00</b>
<i>Includes Precision-Milled Titanium Bar, Abutments and Attachments for All Implants (Unlimited), Premium Denture Teeth, Labor, Model Work, Analog, True-Life™ Set-Up &amp; Finish, Bite Blocks, Verification Jig and Try-In.</i>	
<b>Locator CAD/CAM Milled Bar Overdenture</b>	<b>\$2,995.00</b>
<i>Includes Precision-Milled Titanium Bar, Abutments and Attachments for up to Five Implants, Premium Denture Teeth, Labor, Model Work, Analog, True-Life™ Set-Up &amp; Finish, Bite Blocks, Verification Jig and Try-In.</i>	
<b>Mini Implant Overdenture with O-Ring Housings</b>	<b>\$625.00</b>
<i>Includes Overdenture, O-Ring Housings, Analog and Model Work</i>	
<b>Mini Implant Overdenture</b>	<b>\$425.00</b>
<i>Includes Overdenture and Model Work</i>	

**Notes:** The BruxZir Full-Arch Implant Prosthesis is available for Biomet 3i Certain; Camlog Screw-Line; Dentsply Implants Astra Tech Implant System; Inclusive Tapered Implant System; Nobel Biocare Branemark System, NobelActive and NobelReplace; Straumann Bone Level; and Zimmer Dental Screw-Vent.

**Prices may vary based on number of implants and cost of ancillary components of chosen implant system.**

Inclusive CAD/CAM milled implant bars and/or frameworks are available for Biomet 3i Certain; Camlog Screw-Line; Dentsply Implants Astra Tech Implant System; Inclusive Tapered Implant System; Keystone Dental PrimaConnex; Neoss; Nobel Biocare Branemark System, NobelActive and NobelReplace; Straumann Bone Level and synOcta (RN, WN); and Zimmer Dental Screw-Vent.

**IN-LAB WORKING DAYS:  
 CROWN & BRIDGE**

*In-Lab working days do not include day of pick-up or day of delivery*

Attachments ..... <b>Add 2</b>	Over 6 units ..... <b>Add 1-2</b>
Crown Under Partial ..... <b>Add 1</b>	PFM with Attachments ..... <b>Add 2</b>
Diagnostic Wax-Up ..... <b>5</b>	PFM - PressTek® ..... <b>5</b>
e.max CAD or Press ..... <b>5</b>	PFM - Classic ..... <b>8</b>
Empress ..... <b>8</b>	Temporaries ..... <b>7</b>
Full-Cast ..... <b>5</b>	Zirconia - BruxZir® ..... <b>5</b>
Lava™ Ult. Res. Nano Ceram ..... <b>5</b>	Zirconia - PFZ ..... <b>7</b>

**IN-LAB WORKING DAYS:  
 REMOVABLES**

*In-Lab working days do not include day of pick-up or day of delivery*

Add Tooth-Colored or Clear Clasp ..... <b>3</b>	Metal Onlay or Backing ..... <b>Add 1</b>
AvaDent™ Denture to Finish ..... <b>10</b>	Occlusion Rims ..... <b>2</b>
AvaDent™ Denture to Set-Up ..... <b>10</b>	RPD Start to Completion ..... <b>9</b>
AvaDent™ ATI Processing ..... <b>3 to 5</b>	RPD with Teeth in Wax ..... <b>7</b>
Custom Tray ..... <b>2</b>	RPD Frame Only with Attachments ..... <b>5</b>
Denture Set-Up Try-In ..... <b>4</b>	Snoring & Sleep Apnea Devices ..... <b>7 to 14</b>
Denture Try-In to Finish ..... <b>4</b>	Stayplate ..... <b>3</b>
Denture Soft Liner/ Acrylic Repair/Reline ..... <b>1 to 3</b>	Splint, Nightguard, Bleach Tray ..... <b>2</b>

**IN-LAB WORKING DAYS:  
 IMPLANT RETAINED RESTORATIONS**

*In-Lab working days do not include day of pick-up or day of delivery*

Bite Block ..... <b>3</b>	Implant Denture or Hybrid Bridge Wax Set-Up Reset/Implant Verification Jig/Premium Hybrid Bridge to Finish ..... <b>4</b>
CAD/CAM Milled Bar ..... <b>9</b>	Implant Denture Wax Set-Up to Finish ..... <b>6</b>
Custom Abutment ..... <b>8</b>	Screw-Retained Crown ..... <b>Add 2</b>
Hybrid Bridge Try-In ..... <b>15</b>	Temporaries Over Implants ..... <b>8</b>
Implant Denture or Hybrid Bridge Transfer/Wax Set-Up Try-In CAD/CAM Milled Bar ..... <b>5</b>	

**IN-LAB WORKING DAYS:  
 IMPLANT TREATMENT PLANNING & GUIDED SURGERY**

*In-Lab working days do not include day of pick-up or day of delivery*

Conventional Radiographic Stent ..... <b>2</b>	Digital Plan ..... <b>2</b>
Clear Acrylic Surgical Stent ..... <b>3</b>	Radiographic Guide (Nobel™) ..... <b>2</b>
Diagnostic Wax-Up ..... <b>5</b>	Scan Prosthesis (SimPlant®, Facilitate®, Navigator®) ..... <b>2</b>
DICOM Conversion Only ..... <b>24hrs.</b>	Surgical Guide/Template ..... <b>5 to 8</b>

**Fees and lab times effective May 1, 2014 and are subject to change.**