

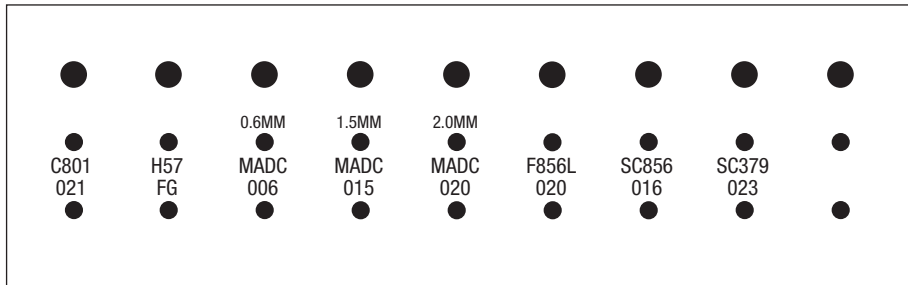
Tech Specs

Dental Masters - Perfect Prep Kit

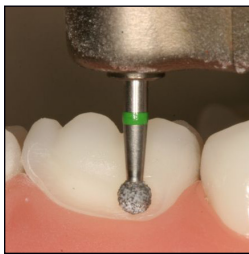
D · E · N · T · A · L
MASTERS

LABORATORY™

The Perfect Prep™ System
PREPARATION KIT
 Developed by Dr. Wayne Sutton



Suggested Techniques



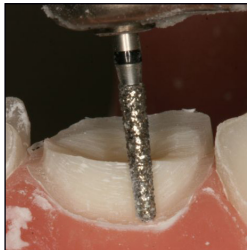
Step 1. C801-021 This round diamond is the ideal shape and depth to simultaneously place the gingival depth cut and create a gingival margin. Used correctly, it will provide the ideal margin for conventional or CAD-CAM fabricated restorations.



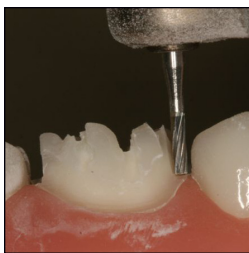
Step 5. SC379-023 This convex football shaped diamond is ideal for preparing the lingual surfaces of anterior teeth and connection of occlusal depth cuts on posterior molars.



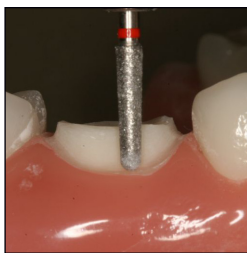
Step 2. MADC-015 This 1.5 mm long self-limiting axial reduction diamond is designed to allow the ideal amount of tooth removal for all ceramic and porcelain fused to metal crown preparations in the anterior or posterior.



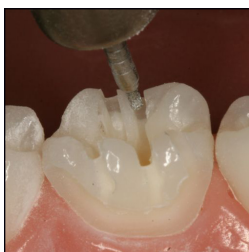
Step 6. SC856-016 This chamfer diamond is used to blend all reduction planes and finish all interproximal margins to an ideally reduced and shaped form.



Step 3. H57-FG This carbide is used to break contacts where adjacent teeth are not going to be prepared. It is also helpful for the removal of old existing restorations.



Step 7. 856L-020F This fine finishing diamond is used to smooth and refine all margins and axial line angles to provide a perfect and clean preparation as a final step. There should be no sharp points left on the final preparation.



Step 4. MADC-020 This 2.0mm self-limiting axial reduction diamond is used to place incisal edge cuts for anterior teeth and occlusal depth cuts for posterior teeth.



Final Prep: Designed to allow ideal reduction for all ceramic and PFM restorations

For more information or to purchase a Perfect Prep™ System bur kit, please contact Dental Masters Laboratory at (800) 368-8482